



Government of the People's Republic in Bangladesh
Ministry of Health & Family Welfare

HEALTH BULLETIN

The data belong to January-December 2017

Noakhali 250 Bed General Hospital

District: Noakhali, Division: Chattogram



Management Information System (MIS)
Directorate General of Health Services (DGHS)
Ministry of Health & Family Welfare (MOHFW)
Mohakhali, Dhaka-1212

Table of Contents

● Basic Information	3
● COVID-19	
COVID-19 Case	4
COVID-19 Vaccination	5
● HSS Scoring	6
● Reporting Rate	
Facility	7
Community	9
● Maternal health	11
● Newborn and Child Health	13
● Hospital Statistics	
OPD, Emergency, Admissions & Deaths	18
Major surgeries & minor surgeries	19
Utilization of health services	20
● ICT Equipment	22
● Human Resources	22
● Decisions	22

Basic Information



Basic Information

Name	Noakhali 250 Bed General Hospital
Code	10001049
Mailing address	Majidee court,sadar ,Noakhali.
Landphone	032161333
Mobile	01711447315
Email	noakhali@hospi.dghs.gov.bd
Name of the head of facility	Razib Ahmed choudhury
Facility head Phone Number	01711470636
GPS location	latitude:22.8720, longitude:91.0884

Source: Human Resource Information System (HRIS)

Organization	Estimated Population	Estimated Pregnant Women	Estimated Birth	Estimated Under 5
--------------	----------------------	--------------------------	-----------------	-------------------

Source: WHO

Existing Health Facilities

Type	Facility #	Bed #
District/General Hospital	1	250
Total	1	250

Source: Health Facility Registry & HRIS

HSS Scoring

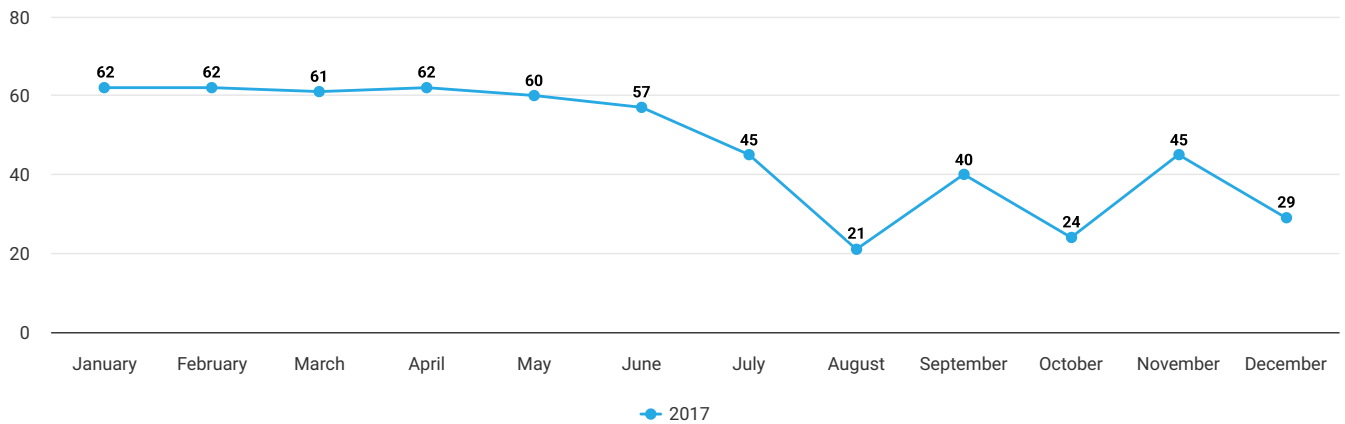


HSS Scoring

Month	Rank	Total Score	Facility	Onsite Monitoring
January	62	30.99	30.99	0.00
February	62	28.93	28.93	0.00
March	61	31.01	31.01	0.00
April	62	25.55	25.55	0.00
May	60	36.36	36.36	0.00
June	57	42.5	42.50	0.00
July	45	60.23	60.23	0.00
August	21	74.7	60.61	14.09
September	40	60.63	60.63	0.00
October	24	77.21	62.21	15.00
November	45	64.59	64.59	0.00
December	29	70.6	55.15	15.45

Source: HSS

Rank



Reporting Rate- Facility

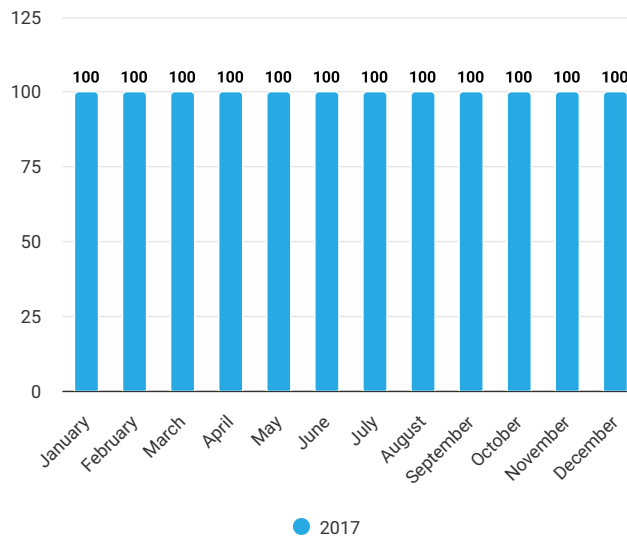
Reporting Rate

>=90
 >=80 and <90
 <80

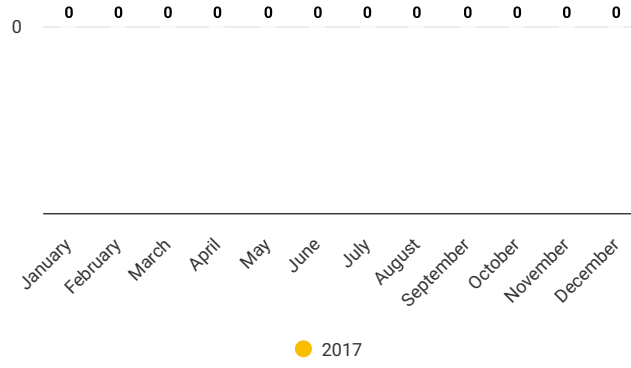
	EmOC	IMCI	SCANU/ NSU	KMC	Adolescent
January	100.0	0.0	0.0	100.0	0.0
February	100.0	0.0	0.0	100.0	0.0
March	100.0	0.0	0.0	100.0	0.0
April	100.0	0.0	0.0	100.0	0.0
May	100.0	0.0	0.0	100.0	0.0
June	100.0	0.0	0.0	100.0	0.0
July	100.0	0.0	0.0	100.0	0.0
August	100.0	0.0	0.0	100.0	0.0
September	100.0	0.0	0.0	100.0	0.0
October	100.0	0.0	0.0	100.0	0.0
November	100.0	0.0	0.0	100.0	0.0
December	100.0	0.0	0.0	100.0	0.0

Source: DHIS2 2017

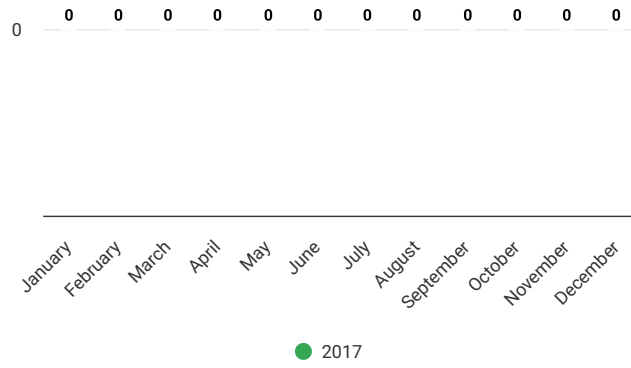
EmOC



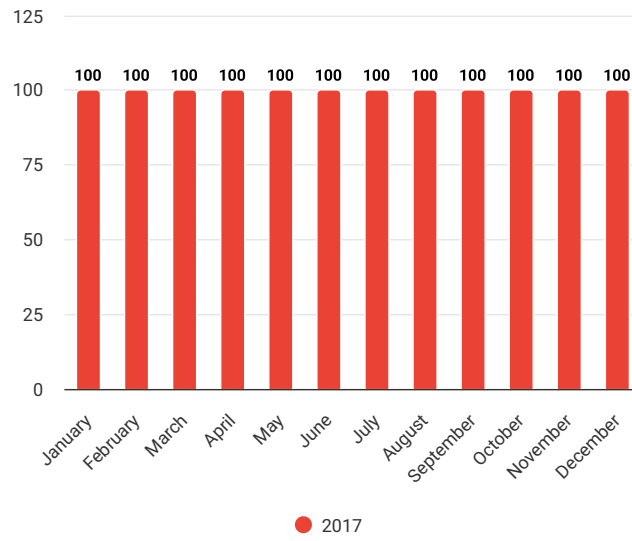
IMCI



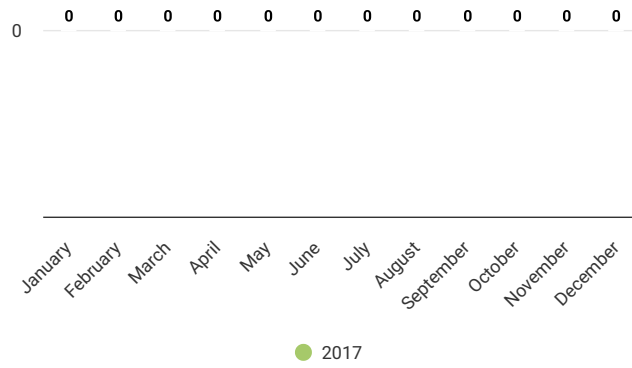
SCANU/ NSU



KMC



Adolescent



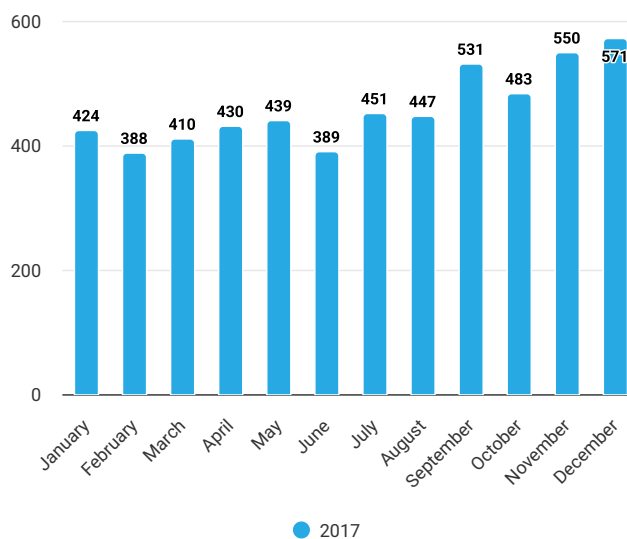
Maternal health

Maternal health

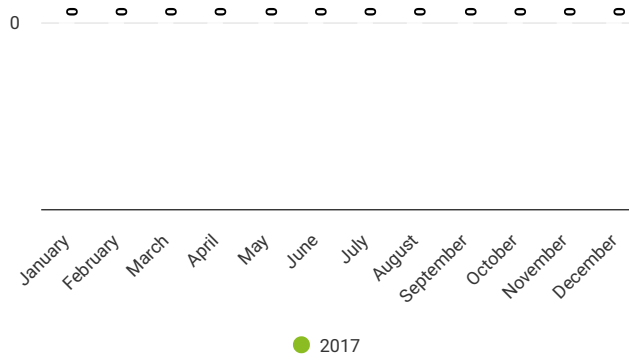
	ANC1	ANC2	ANC3	ANC4	Delivery	NVD	Cesarean	Maternal Death	Maternal Death Reviewed	PNC1	PNC2
January	424	0	0	0	292	100	183	0	0	325	292
February	388	0	0	0	262	99	158	0	0	289	158
March	410	0	0	0	287	106	177	0	0	329	329
April	430	0	0	0	288	125	159	4	0	327	0
May	439	0	0	0	312	160	148	1	0	340	148
June	389	0	0	0	263	146	114	2	0	263	262
July	451	0	0	0	292	130	159	1	0	298	159
August	447	0	0	0	319	130	179	2	0	342	179
September	531	0	0	0	319	148	165	1	0	347	165
October	483	0	0	0	349	152	189	1	0	347	189
November	550	0	0	0	342	139	196	1	0	390	196
December	571	0	0	0	362	170	187	3	0	460	187
Total	5513	0	0	0	3687	1605	2014	16	0	4057	2264

Source: DHIS2 Monthly EmOC Data Set

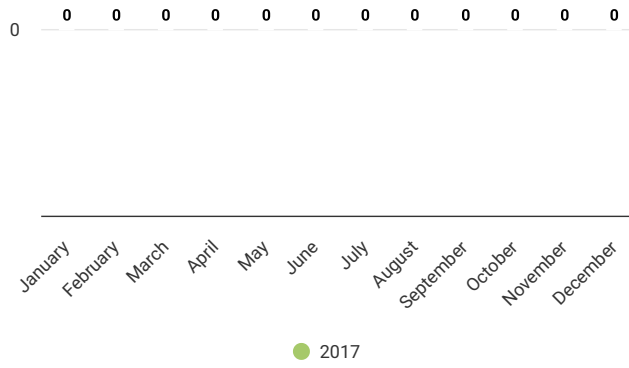
No. of mother received ANC 1



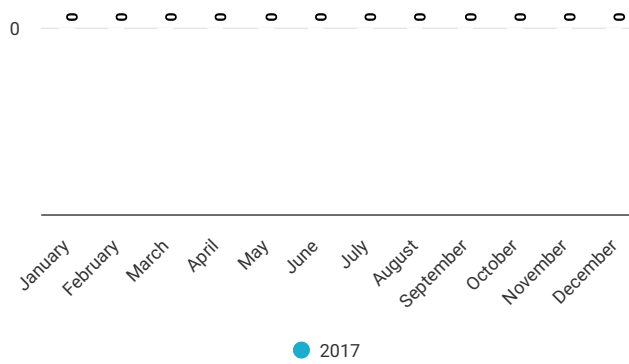
No. of mother received ANC 2



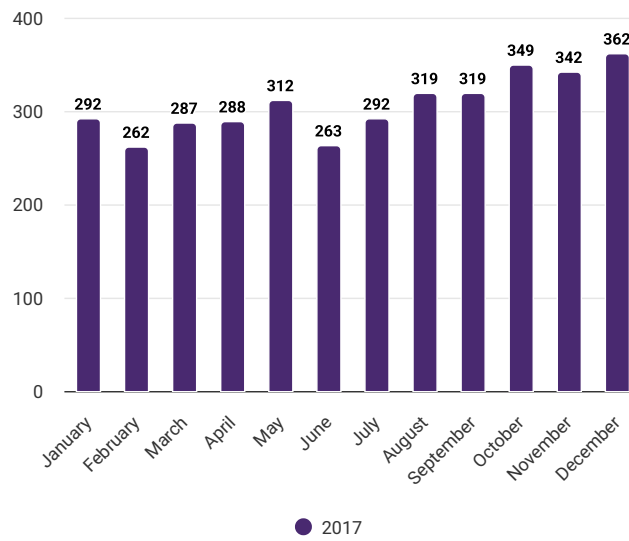
No. of mother received ANC 3



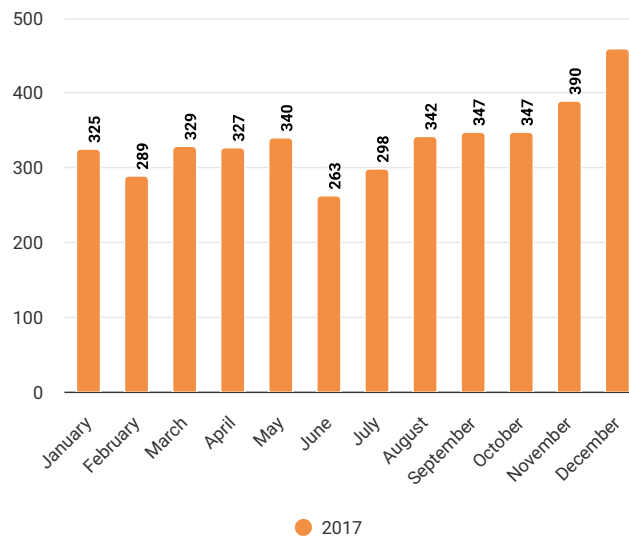
No. of mother received ANC 4



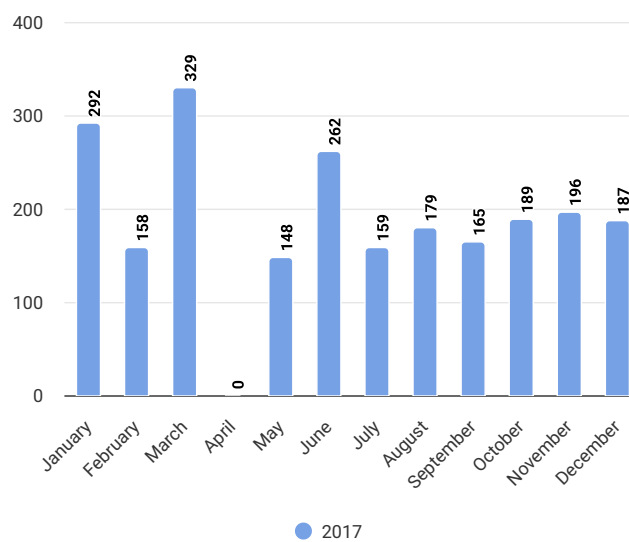
Total deliveries in EmONC facilities



No. of mother received PNC 1



No. of mother received PNC 2



Newborn and Child Health

Newborn

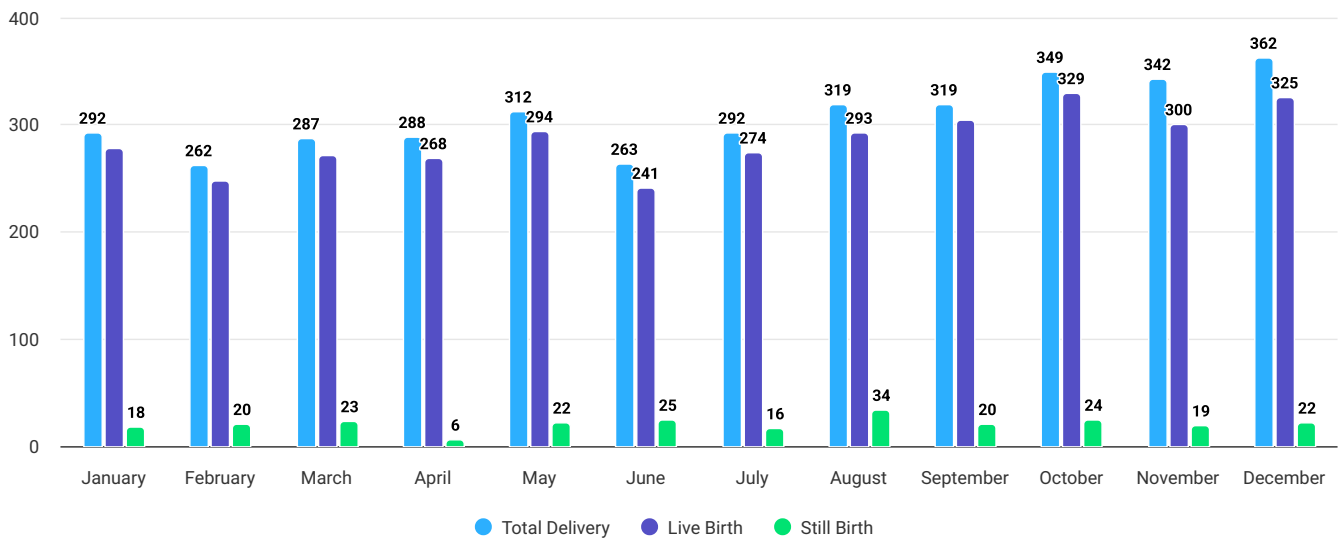
	Total Delivery	Live birth	Still birth	Fresh	Macerated	Drying in 1 minute	Skin to skin care	7.1% CHX application	Breastfeeding within 1 hour	Delayed bathing	Not breathed or cried properly	Resuscitated with stimulation	Resuscitated with bag-mask	PNC-1	PNC-2
January	292	278	18	3	15	0	109	278	267	0	13	278	278	278	183
February	262	247	20	3	17	0	104	247	239	0	12	247	27	247	158
March	287	271	23	23	0	0	0	271	271	0	13	21	21	271	329
April	288	268	6	2	4	0	0	268	268	0	52	36	0	268	288
May	312	294	22	2	20	0	294	294	294	0	7	32	294	294	148
June	263	241	25	2	23	0	241	241	241	0	8	241	15	241	114
July	292	274	16	3	13	0	121	274	274	0	14	14	14	274	159
August	319	293	34	22	12	0	186	293	293	0	26	17	23	293	179
September	319	304	20	3	17	0	119	304	304	0	19	27	24	304	165
October	349	329	24	4	20	0	143	329	329	0	63	116	33	329	347
November	342	300	19	3	16	0	121	300	300	0	53	83	35	300	196
December	362	325	22	3	19	0	122	325	325	0	46	87	42	325	362
Total	3,687	3,424	249	73	176	0	1,560	3,424	3,405	0	326	1,199	806	3,424	2,628

Source: DHIS2

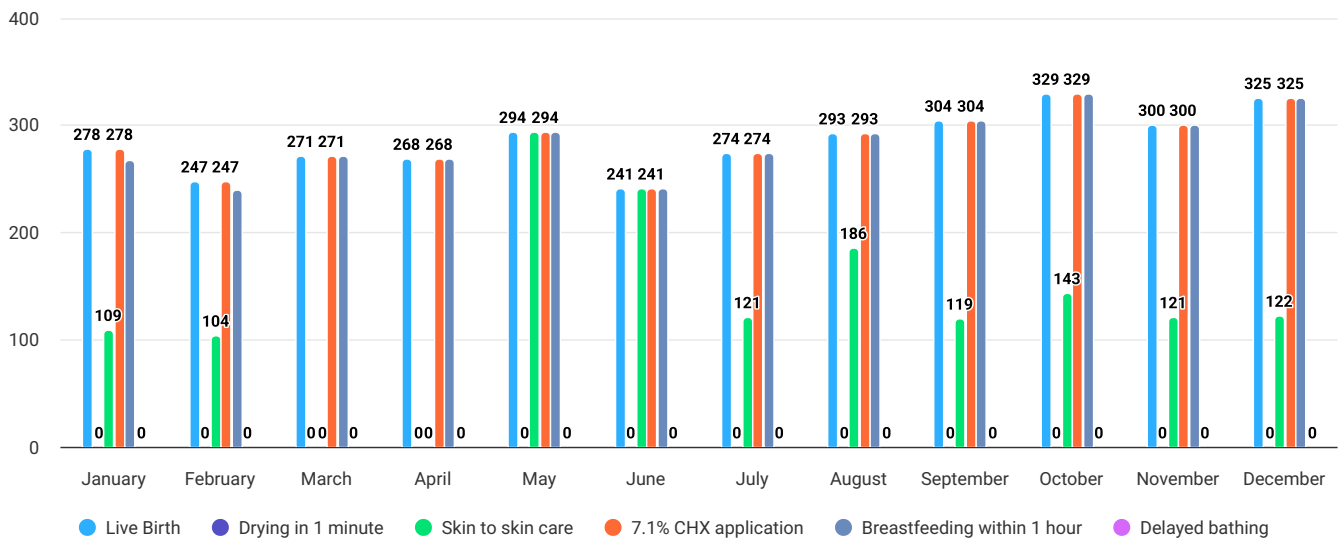
Child Health

	Total Children (0-5 years old)	Pneumonia (#)	Pneumonia (%)	Diarrhoea (#)	Diarrhoea (%)
January	1,772	460	26	385	22
February	1,819	300	16	200	11
March	1,920	302	16	210	11
April	1,849	320	17	220	12
May	1,327	51	4	0	0
June	1,274	45	4	72	6
July	1,187	143	12	200	17
August	1,354	220	16	150	11
September	1,253	178	14	211	17
October	1,445	331	23	186	13
November	1,360	302	22	159	12
December	1,383	55	4	170	12
Total	17,943	2,707		2,163	

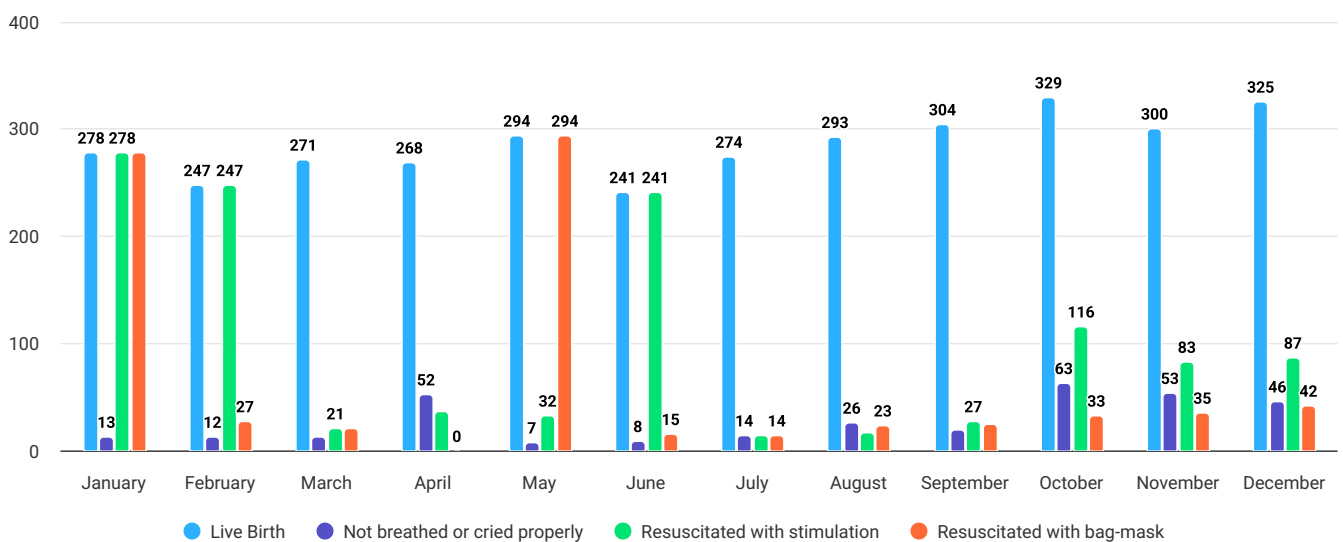
Status of total delivery, live birth and still birth



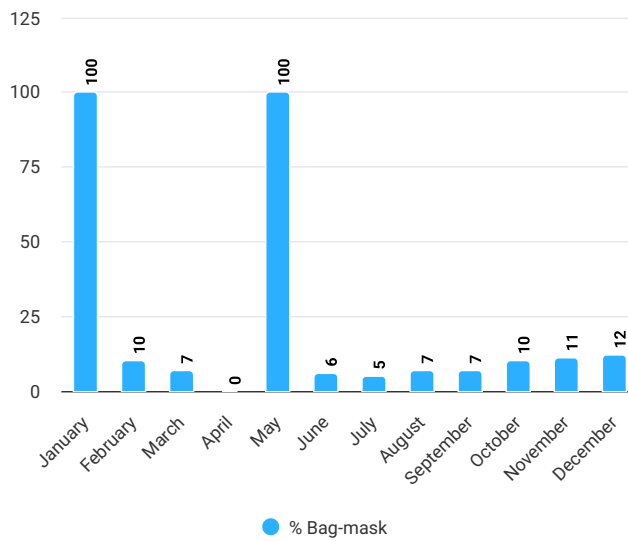
Number of newborn received ENC services



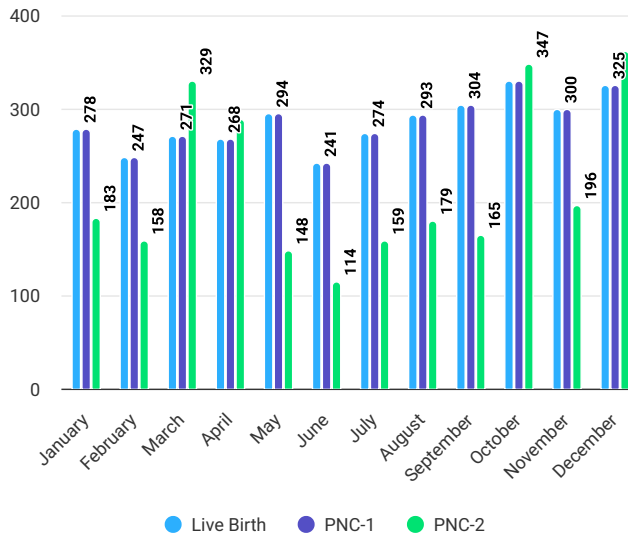
Status of newborn resuscitation



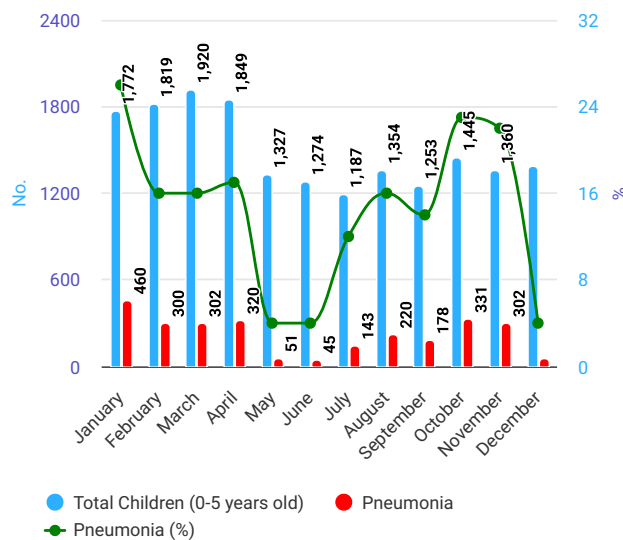
Percentage of bag mask utilized against total live birth



Number of newborn received PNC-1 & PNC-2

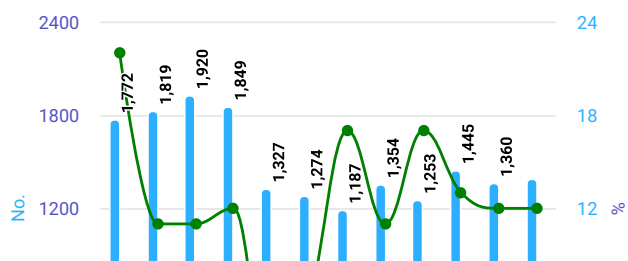


Total number of children (0-5 years old) with pneumonia received IMCI service



Total number of children (0-5 years old) with diarrhoea received IMCI service

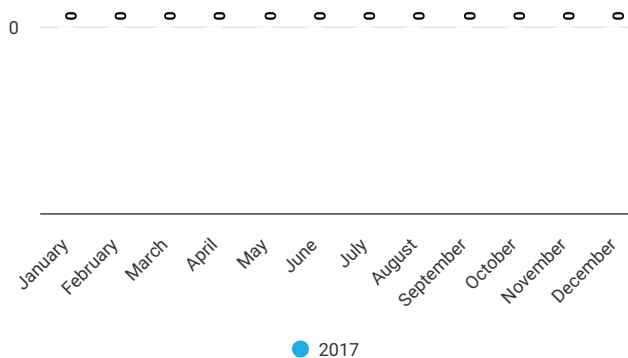
Adolescent health



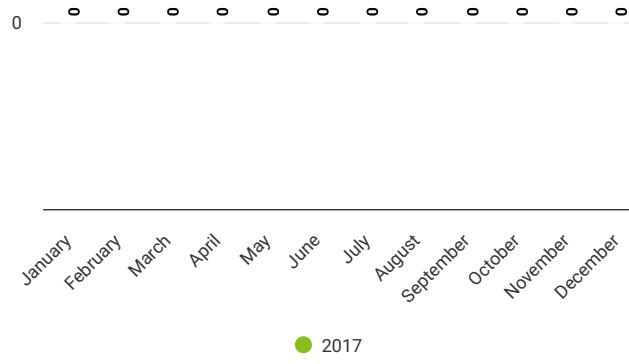
	# of received services	# of Male	# of Female	# of received counseling on RTI/ STI	# of girls using sanitary napkin
January	0	0	0	0	0
February	0	0	0	0	0
March	0	0	0	0	0
April	0	0	0	0	0
May	0	0	0	0	0
June	0	0	0	0	0
July	0	0	0	0	0
August	0	0	0	0	0
September	0	0	0	0	0
October	0	0	0	0	0
November	0	0	0	0	0
December	0	0	0	0	0
Total	0	0	0	0	0

Source: DHIS2 Monthly Adolescent dataset

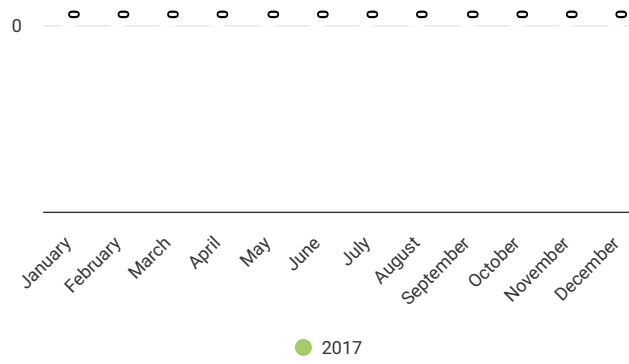
No. of Adolescent received services



No. of Adolescent received counseling on RTI/ STI



No. of girls using sanitary napkin



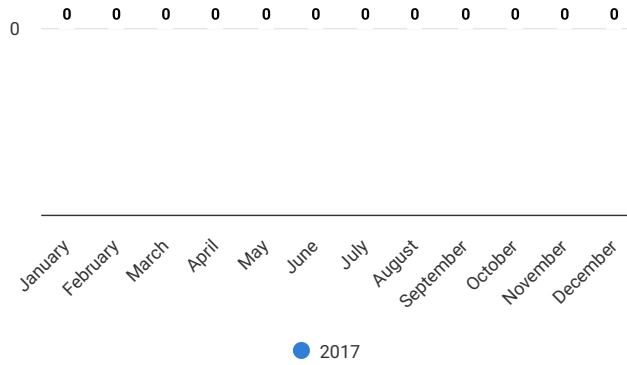
Hospital Statistics

No. of OPD, Emergency, Admissions

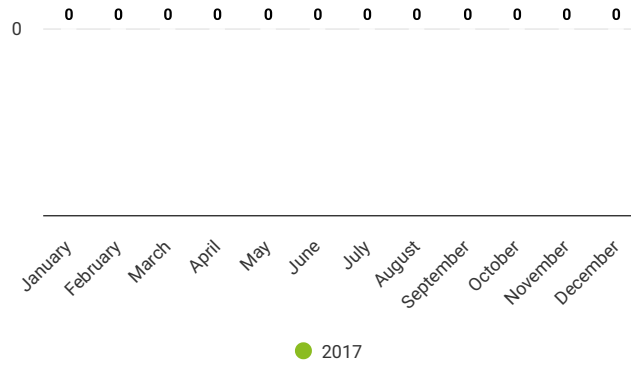
	OPD Visit	Emergency Visit	Admission	Number of deaths
January	0	0	0	0
February	0	0	0	0
March	0	0	0	0
April	0	0	0	0
May	0	0	0	0
June	0	0	0	0
July	0	0	0	0
August	0	0	0	0
September	0	0	0	0
October	0	0	0	0
November	0	0	0	0
December	0	0	0	0
Total	0	0	0	0

Source: DHIS2 Daily OPD and Emergency Visits, Admission,Death Data Set

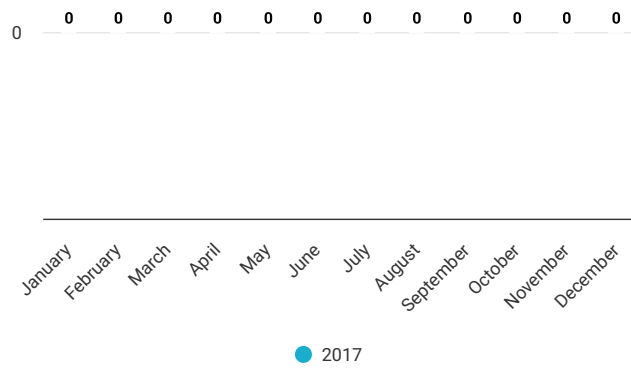
OPD Visits



Emergency Visits



Admission

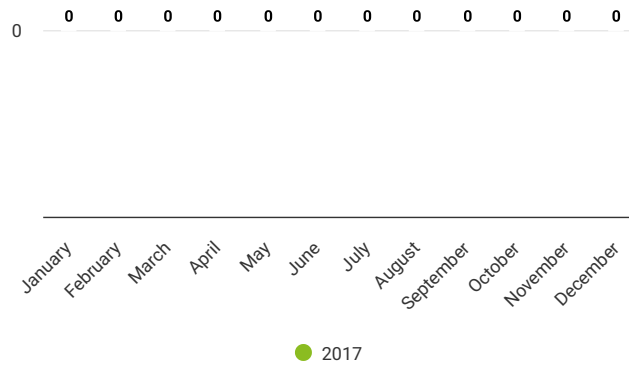


Trend of major surgeries & minor surgeries

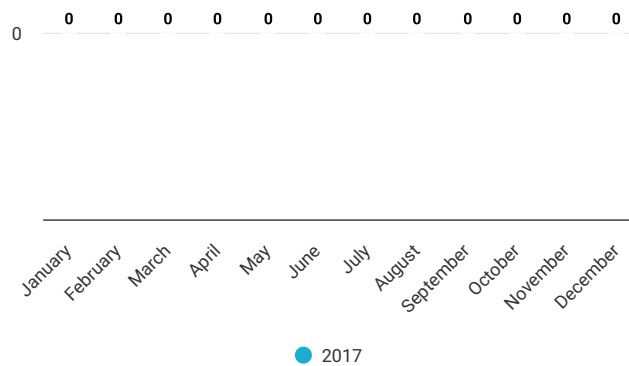
	Major surgery	Minor surgery
January	0	0
February	0	0
March	0	0
April	0	0
May	0	0
June	0	0
July	0	0
August	0	0
September	0	0
October	0	0
November	0	0
December	0	0
Total	0	0

Source: DHIS2 Monthly HMC meeting

Major surgery



Minor surgery

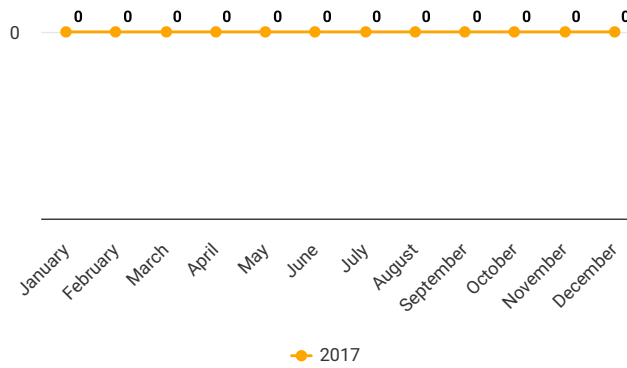


Utilization of health services

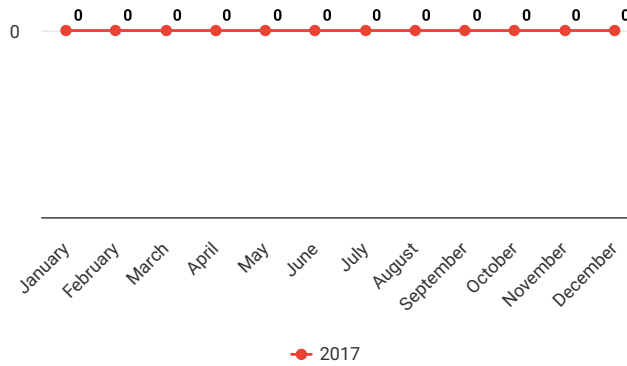
	BOR	ALS
January	0.0	0.0
February	0.0	0.0
March	0.0	0.0
April	0.0	0.0
May	0.0	0.0
June	0.0	0.0
July	0.0	0.0
August	0.0	0.0
September	0.0	0.0
October	0.0	0.0
November	0.0	0.0
December	0.0	0.0

Source: DHIS2 Monthly Hospital Bed Statement

Bed Occupancy Rate



ALS



Facility Service Fee

Hospital Fee

	Out Patient			INPatient			Emergency			Blood transfusion			Dialysis			Laboratory		
	# Paid	# Free	User Fee	# Paid	# Free	User Fee	# Paid	# Free	User Fee	# Paid	# Free	User Fee	# Paid	# Free	User Fee	# Paid	# Free	User Fee
January	0	0	0	0	0	0	0	0	0	0	0	0	0	0	0	0	0	0
February	0	0	0	0	0	0	0	0	0	0	0	0	0	0	0	0	0	0
March	0	0	0	0	0	0	0	0	0	0	0	0	0	0	0	0	0	0
April	0	0	0	0	0	0	0	0	0	0	0	0	0	0	0	0	0	0
May	0	0	0	0	0	0	0	0	0	0	0	0	0	0	0	0	0	0
June	0	0	0	0	0	0	0	0	0	0	0	0	0	0	0	0	0	0
July	0	0	0	0	0	0	0	0	0	0	0	0	0	0	0	0	0	0
August	0	0	0	0	0	0	0	0	0	0	0	0	0	0	0	0	0	0
September	0	0	0	0	0	0	0	0	0	0	0	0	0	0	0	0	0	0
October	0	0	0	0	0	0	0	0	0	0	0	0	0	0	0	0	0	0
November	0	0	0	0	0	0	0	0	0	0	0	0	0	0	0	0	0	0
December	0	0	0	0	0	0	0	0	0	0	0	0	0	0	0	0	0	0
Total	0	0	0	0	0	0	0	0	0	0	0	0	0	0	0	0	0	0

	Ultrasonogram			X-Ray			ECG			Echocardiogram & ETT			Endoscopy & Colonoscopy			MRI		
	# Paid	# Free	User Fee	# Paid	# Free	User Fee	# Paid	# Free	User Fee	# Paid	# Free	User Fee	# Paid	# Free	User Fee	# Paid	# Free	User Fee
January	0	0	0	0	0	0	0	0	0	0	0	0	0	0	0	0	0	0
February	0	0	0	0	0	0	0	0	0	0	0	0	0	0	0	0	0	0
March	0	0	0	0	0	0	0	0	0	0	0	0	0	0	0	0	0	0
April	0	0	0	0	0	0	0	0	0	0	0	0	0	0	0	0	0	0
May	0	0	0	0	0	0	0	0	0	0	0	0	0	0	0	0	0	0
June	0	0	0	0	0	0	0	0	0	0	0	0	0	0	0	0	0	0
July	0	0	0	0	0	0	0	0	0	0	0	0	0	0	0	0	0	0
August	0	0	0	0	0	0	0	0	0	0	0	0	0	0	0	0	0	0
September	0	0	0	0	0	0	0	0	0	0	0	0	0	0	0	0	0	0
October	0	0	0	0	0	0	0	0	0	0	0	0	0	0	0	0	0	0
November	0	0	0	0	0	0	0	0	0	0	0	0	0	0	0	0	0	0
December	0	0	0	0	0	0	0	0	0	0	0	0	0	0	0	0	0	0
Total	0	0	0	0	0	0	0	0	0	0	0	0	0	0	0	0	0	0

	CT Scan			Ambulance			COVID-19 (Inpatient)			COVID-19 (Antigen + PCR)			COVID-19(ICU)			Others		
	# Paid	# Free	User Fee	# Paid	# Free	User Fee	# Paid	# Free	User Fee	# Paid	# Free	User Fee	# Paid	# Free	User Fee	# Paid	# Free	User Fee
January	0	0	0	0	0	0	0	0	0	0	0	0	0	0	0	0	0	0
February	0	0	0	0	0	0	0	0	0	0	0	0	0	0	0	0	0	0
March	0	0	0	0	0	0	0	0	0	0	0	0	0	0	0	0	0	0
April	0	0	0	0	0	0	0	0	0	0	0	0	0	0	0	0	0	0
May	0	0	0	0	0	0	0	0	0	0	0	0	0	0	0	0	0	0
June	0	0	0	0	0	0	0	0	0	0	0	0	0	0	0	0	0	0
July	0	0	0	0	0	0	0	0	0	0	0	0	0	0	0	0	0	0
August	0	0	0	0	0	0	0	0	0	0	0	0	0	0	0	0	0	0
September	0	0	0	0	0	0	0	0	0	0	0	0	0	0	0	0	0	0
October	0	0	0	0	0	0	0	0	0	0	0	0	0	0	0	0	0	0
November	0	0	0	0	0	0	0	0	0	0	0	0	0	0	0	0	0	0
December	0	0	0	0	0	0	0	0	0	0	0	0	0	0	0	0	0	0
Total	0	0	0	0	0	0	0	0	0	0	0	0	0	0	0	0	0	0

Source: DHIS2

MCCOD

MCCOD Reporting

	No. of entry in MCCoD module	No. of death (Aggregate)	%
--	------------------------------	--------------------------	---

Source: DHIS2

MCCOD Major Cause of Death

	Unclassified	Certain infectious and parasitic diseases	Neoplasms	Blood and blood-forming organs and certain disorders	Endocrine nutritional metabolic	Mental behavioural disorders	Nervous system	Eye Adnexa	Ear Mastoid	Circulatory system
January	0	0	0	0	0	0	0	0	0	0
February	0	0	0	0	0	0	0	0	0	0
March	0	0	0	0	0	0	0	0	0	0
April	0	0	0	0	0	0	0	0	0	0
May	0	0	0	0	0	0	0	0	0	0
June	0	0	0	0	0	0	0	0	0	0
July	0	0	0	0	0	0	0	0	0	0
August	0	0	0	0	0	0	0	0	0	0
September	0	0	0	0	0	0	0	0	0	0
October	0	0	0	0	0	0	0	0	0	0
November	0	0	0	0	0	0	0	0	0	0
December	0	0	0	0	0	0	0	0	0	0

	Respiratory diseases	Digestive	Skin subcutaneous	Musculoskeletal system connective tissue	Genitourinary system	Pregnancy childbirth puerperium	Certain conditions originating in perinatal period	Congenital chromosomal abnormalities	Symptoms signs not classified	External causes morbidity & mortality	Road Accident
January	0	0	0	0	0	0	0	0	0	0	0
February	0	0	0	0	0	0	0	0	0	0	0
March	0	0	0	0	0	0	0	0	0	0	0
April	0	0	0	0	0	0	0	0	0	0	0
May	0	0	0	0	0	0	0	0	0	0	0
June	0	0	0	0	0	0	0	0	0	0	0
July	0	0	0	0	0	0	0	0	0	0	0
August	0	0	0	0	0	0	0	0	0	0	0
September	0	0	0	0	0	0	0	0	0	0	0
October	0	0	0	0	0	0	0	0	0	0	0
November	0	0	0	0	0	0	0	0	0	0	0
December	0	0	0	0	0	0	0	0	0	0	0

Source: DHIS2

Human Resources

Status of Human Resources

Professional Category	Sanctioned	Filled	Vacant	Vacant %
Total	0	0	0	nan

Source: HRIS

ICT Equipment Distribution & Tracking System

Equipment status

Equipment	Total	Active	In Stock	Repairable	Not Repairable
-----------	-------	--------	----------	------------	----------------

Source: ICT Equipment Distribution & Tracking System

Facility Decisions



Hospital Decision

	Decision 1	Decision 2	Decision 3	Decision 4	Decision 5
January					
February					
March					
April					
May					
June					
July					
August					
September					
October					
November					
December					

Source: DHIS2

